



## Douglas Miniatures

### CATALOGUE

#### PRICE LIST

|           | 20 mm.                       |                                 |                               |                                 | OFFICERS   | STANDARD<br>BEARERS |                         |
|-----------|------------------------------|---------------------------------|-------------------------------|---------------------------------|--|---------------------|-------------------------|
|           | FOOT<br>FIGURES<br>5 PER BOX | MOUNTED<br>FIGURES<br>2 PER BOX | CANNON<br>& LIMBER<br>PER BOX | ARTILLERY<br>CREWS<br>4 PER BOX | SOLD SEPARATELY<br>1 TO 4 FOOT FIGURES<br>OR 5 PER BOX |                     | HORSES<br>AND<br>TRACES |
| PAINTED   | 15/-                         | 12/-                            | 9/11                          | 14/-                            | 3/6  | 3/9                 | 30/-                    |
| UNPAINTED | 6/-                          | 6/-                             | 7/6                           | 5/-                             | 1/6  | 1/9                 | 12/-                    |

54 mm.

PAINTED

£4 5 0

POSTAGE RATES

UNPAINTED

14/11

ONE BOX SIXPENCE  
TWO TO FOUR BOXES ONE SHILLING  
OVER FIVE POUNDS POST FREE

ONE KIT PER BOX

BOTH 54 mm. & 20 mm. FIGURES COME BOXED  
COMPLETE WITH PAINTING INSTRUCTIONS

DOUGLAS MINIATURES  
41 TRINITY ROAD  
ST JOHNS  
NARBOROUGH  
LEICESTER ENGLAND

PROPRIETORS J.D. AND N.J. JOHNSTON

PHONE NARBOROUGH 2449

DOUGLAS MINIATURES ARE MADE FROM HIGH QUALITY MATERIALS WITH BOTH THE CONNOISSEUR COLLECTOR AND WARGAMER IN MIND DOUGLAS MINIATURES ARE ALWAYS INTERESTED TO HEAR OF ANY SPECIAL REQUIREMENTS YOU MAY HAVE AND A FREE QUOTATION CAN BE HAD ON REQUEST. ALL FIGURES COME BOXED WITH PAINTING INSTRUCTIONS AND FIGURES CAN ALSO BE OBTAINED PAINTED. SPECIAL TERMS FOR SHOPS, DEALERS, ETC BY NEGOTIATION. MUSEUM AND MODEL TRADE SPECIAL REQUIREMENTS A SPECIALITY.

AGENT FOR CANADA AND THE U.S.A.  
MR. D. FROST  
882 PARKDALE STREET  
WINNIPEG 22  
MANITOBA  
CANADA



## 54 mm COLLECTOR RANGE

- C1 HIGHLAND CLANSMAN 1689
- C2 ROYAL FUSILIER 1689
- C3 MAHADI WARRIOR 1883
- C4 BRITISH LINE INFANTRY 1883
- C5 CHINESE BOXER INFANTRY 1900
- C6 RUSSIAN GUARD GRENADIER 1800
- C7 SPANISH INFANTRY DEATH REGIMENT 1808
- C8 RUSSIAN STRELITZEN INFANTRY 1670
- C9 BRITISH PIKEMAN 1540
- C10 AZTEC WARRIOR 1519
- C11 GERMAN SS OFFICER WW2
- C12 GERMAN INFANTRY STEEL HELMET WW2
- C13 GERMAN INFANTRY SIDE CAP WW2
- C14 BENGAL INFANTRY SEPOY 1855
- C15 GERMAN INFANTRY DRUMMER 1913/15
- C16 BRITISH DESERT RAT WW2
- C17 JAPANESE INFANTRY 1904
- C18 GERMAN MUSKETEER 1705
- C19 INDIAN LANCER 1910



C.14 41st Bengal Native Inf., Sepoy

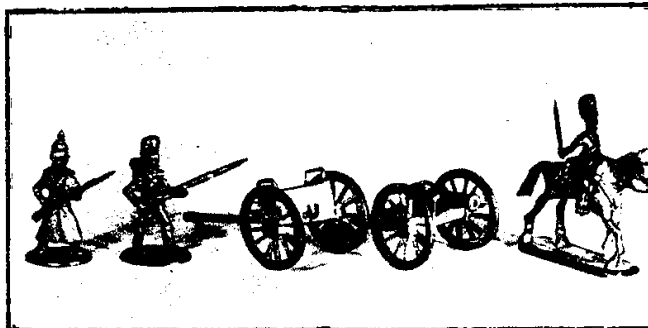


GERMAN WAFPEN SS LIEUTENANT  
1943

CAP grey green top black side and peak with silver eagle and cords cockade black white and red JACKET grey green with black belt and holster silver eagle on left upper arm and black narrow edged silver band on lower arm TROUSERS blue grey BOOTS and PISTOL black CAP also has a silver death head badge on the front SHOULDER BOARDS black COLLAR BADGE black and silver

## CRIMEAN 20mm

- R1 RUSSIAN OFFICER DRAWN SWORD
- R2 RUSSIAN INFANTRY ADVANCING
- R3 RUSSIAN INFANTRY FIRING
- R4 RUSSIAN COSSACK HORSE ARTILLERY OFFICER DRAWN SWORD
- R5 GUNNER WITH RAMROD
- R6 GUNNER WITH SPIKE
- R7 GUNNER WITH BALL
- R8 RUSSIAN CANON AND LIMBER
- R9 RUSSIAN DRAGOONS MOUNTED
- R10 RUSSIAN COSSACKS MOUNTED
- R11 RUSSIAN LANCERS MOUNTED
- R12 4 HORSES AND TRACES WITH MOUNTED OUTRIDERS FOR A RUSSIAN CANON AND LIMBER
- R13 RUSSIAN CORCASION RIFLES ADVANCING
- F1 FRENCH ZOUAVES ADVANCING
- B1 BRITISH LIGHT DRAGOONS MOUNTED
- B2 BRITISH SCOTS GREYS MOUNTED
- B3 BRITISH LANCERS MOUNTED
- B4 BRITISH HEAVY DRAGOONS MOUNTED
- B5 BRITISH LINE INFANTRY OFFICER DRAWN SWORD
- B6 BRITISH LINE INFANTRY ADVANCING
- B7 BRITISH LINE INFANTRY FIRING
- B8 BRITISH GUARDS OFFICER DRAWN SWORD
- B9 BRITISH GUARDS ADVANCING
- B10 BRITISH GUARDS FIRING
- B11 BRITISH CANON AND LIMBER
- B12 BRITISH FIELD ARTILLERY OFFICER DRAWN SWORD
- B13 BRITISH FIELD ARTILLERY WITH SPIKE
- B14 BRITISH FIELD ARTILLERY WITH BALL
- B15 BRITISH FIELD ARTILLERY WITH RAMROD
- B16 4 HORSES AND TRACES WITH MOUNTED OUTRIDERS FOR A BRITISH CANON AND LIMBER



# NAPOLEONIC 20mm

- NP1 SPANISH INFANTRY DEATH REGIMENT ADVANCING
- NP2 SPANISH INFANTRY GRENADIERS ADVANCING
- NP3 SPANISH INFANTRY OFFICER DRAWN SWORD ADVANCING
- NP4 FRENCH GRENADIERS OF THE GUARD ADVANCING
- NP5 AUSTRIAN HUNGARIAN GRENADIERS ADVANCING
- NP6 BRUNSWICK BLACK CORPS ADVANCING
- NP7 BRITISH LINE INFANTRY ADVANCING
- NP8 BRITISH LINE INFANTRY FIRING
- NP9 BRITISH LINE INFANTRY OFFICER DRAWN SWORD
- NP10 BRITISH LINE INFANTRY STANDARD BEARER
- NP11 FRENCH LINE INFANTRY VOLTIGEURS ADVANCING



N.P.5 Austrian/Hungarian Grenadiers

DOUGLAS MINIATURES  
AUSTRIAN HUNGARIAN GRENADIERS 1805

HAT black with brass front plate and alternate blue and white stripes in the centre at the back TUNIC white with blue collar cuffs and turnbacks CROSS STRAPS white TROUSERS blue with yellow austrian knots at top on front and yellow stripes down side seams BLANKET ROLL grey PACK brown CARTRIDGE BOX black also the sword scabbard this also has a brass hilt and tip BUTTONS brass RIFLE brown also with white sling SHOES black.

# MARLBOROUGH AND SEVEN YEARS WAR

- FOOT
- MB 1 MUSKETEER. FIRING
  - MB 2 MUSKETEER. AT THE READY
  - MB 3 GRENADIER. FIRING
  - MB 4 GRENADIER. AT THE READY
- CAVALRY
- MB 5 HORSE GRENADIERS
  - MB 6 HORSE DRAGOONS
  - MB 7 FOOT OFFICER
  - MB 8 STANDARD BEARER



MB 3



MB 2

DOUGLAS MINIATURES  
TROOPER 2ND HORE GRENADIERS  
1751

HEADDRESS front red edged white crown and garter in natural cols embroidery white small flap blue white thistle and foliage yellow scroll with motto nemo me impune lacessit. TURNBACKS blue. MUSKET brown. BELT AND CARTOUCHE BOX buff. COAT red, blue cuff red slash lace white blue turnbacks silver buttons. WAISTCOAT AND BREECHES buff. CLOAK red and blue. SWORD steel. HORSE HOUSINGS red with yellow edge and central blue stripe and narrow red piping on outside edge.

# 20 mm

# SKYBIRDS

1/72 SCALE



**BRITISH ARMY**

- SB1 OFFICER WALKING WITH PACE STICK
- SB2 OFFICER WALKING WEARING PUTTRES
- SB3 PRIVATE MARCHING
- SB4 PRIVATE MARCHING IN TOP COAT
- SB5 PRIVATE WALKING IN TOP COAT NO WEAPONS
- SB6 PRIVATE AT EASE WITH FIXED BAYONET
- SB7 PRIVATE RUNNING WITH FIXED BAYONET
- SB8 PRIVATE LYING FIRING RIFLE
- SB9 PRIVATE LYING FIRING BREN GUN
- SB10 MOTOR CYCLE AND RIDER
- SB11 OFFICER WITH FIELD GLASSES STANDING
- SB12 OFFICER WITH FIELD GLASSES SITTING
- SB13 PRIVATE SITTING
- SB14 OFFICER OR CIVILIAN SITTING TOP COAT

**PRICE LIST**

| UNPAINTED | PAINTED | FOOT FIGURES<br>MOUNTED AND |
|-----------|---------|-----------------------------|
| 10d       | 2/6d    | MOTORCYCLE FIGURES          |
| 1/9d      | 5/6d    |                             |

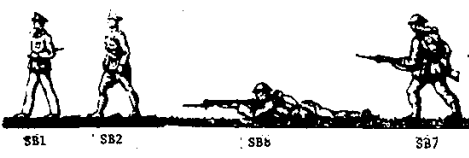
ALL FIGURES ARE OBTAINABLE AS  
SINGLE CASTINGS.

**BRITISH AIRFORCE**

- SB15 PILOT IN TOP COAT AT EASE
- SB16 PILOT IN PARACHUTE AND FLYING SUIT WALKING
- SB17 PILOT RUNNING IN TOP COAT
- SB18 PILOT RUNNING IN FLYING SUIT
- SB19 MECHANIC RUNNING

**GERMAN ARMY**

- SB20 OFFICER WALKING
- SB21 PRIVATE AT EASE OFF DUTY DRESS
- SB22 PRIVATE THROWING GRENADE
- SB23 PRIVATE KNEELING FIRING





Army. The evolution of uniform in the British Army from 1558 to 1802. Left to right—Mounted: Cromwellian Trooper, 1648; Dragoon, 1761; Light Dragoon, 1792. Foot: Infantry, 1558; Royalist and Parliamentarian, 1649; Musketeer, 1685; Infantry of the Line, 1742, 1792, and 1802

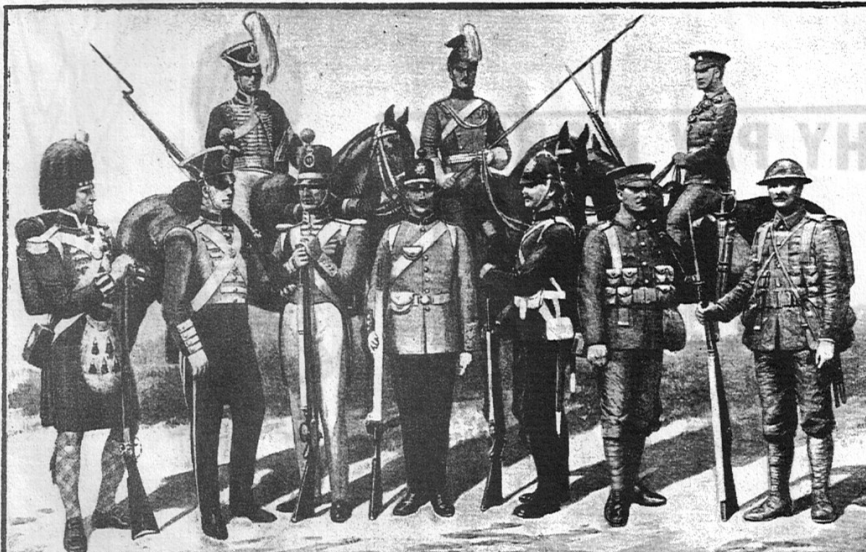
DOUGLAS MINIATURES  
BRITISH PIKEMAN 1540

TUNIC green with light green piping ST. GEORGE CROSS red with white background on left breast BREECHES & ARM ARMOUR brown STOCKINGS buff SHOES brown HAT buff with white feather SWORD black with gold hilt PIKE brown with red tassel

DOUGLAS MINIATURES  
ROYAL FUSILIER 1689

CAP red TURN UP & TASSLE yellow BINDING & ORNAMENTS white COAT red with yellow facings BREECHES & STOCKINGS grey with yellow garters SHOES black with white bows CRAVAT white EQUIPMENTS buff SWORD SCABBARD black SWORD HILT brass

DOUGLAS MINIATURES  
BRITISH SUDAN INFANTRY 1883  
HELMET & UNIFORM khaki EQUIPMENT buff RIFLE SLING buff WATERBOTTLE BLANKET ROLL grey CANTEEN silver HAVASACK buff SHOES black BUTTONS & BUCKLE brass BAYONET SCABBARD black



Army. Development of British Army uniform during the 19th and 20th centuries. Left to right—Mounted: Hussar, 1832; Lancer, 1890; Cavalry Trooper, 1914. Foot: Representatives of the Infantry of 1812, 1836, 1854, 1864, and 1890; service dress, 1914, and trench kit, 1917

DOUGLAS MINIATURES  
BRITISH 8th ARMY 1943

UNIFORM all shades of khaki EQUIPMENT fawn. SOCKS olive drab. BOOTS black. RIFLE brown BAYONET blackish silver. BUCKLES dulled brass.

DOUGLAS MINIATURES  
TROOPER 2ND HOBSE GUARDS 1750

HEADRESS black with gold lace silk bow on left side with gold button. COAT scarlet with blue facings and gold lace and buttons lace in pairs blue patch on collar edged gold. CARBINE BELT blue with gold lace WAISTBELT blue with gold lace. WAISTCOAT buff with gold lace. SWORD black with brass hilt. HORSE HOUSINGS scarlet edged with two gold bands scarlet showing between crown over garter. CYPHER gold on scarlet.

**WATCH FOR EXCITING NEW RELEASES  
IN YOUR FAVOURITE MAGAZINES**

**WHY PAY MORE?**

INVEST IN

**Douglas Miniatures**

